



KAKADE LASER

An ISO 9001:2015 Company

Manufacturer of Precision Engineering & Sheet Metal Components



CNC Laser Cutting Service



CNC Tube & Pipe Cutting Service



CNC Machining Service



CNC Bending Service



CNC Router Service



CNC Laser Marking Service



CNC Waterjet Service



CNC EDM Service



Powder Coating Service



CNC Wirecut Service



Sheet Metal Fabrication Service



UV Printing Service



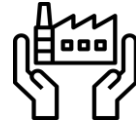
CNC Acrylic Laser Cutting Service



www.kakadelaser.in

Scroll Down 

About Us



Date Of Establishment: 1st April 1998



Employee: 320+



Sales Turnover: ₹32 Crore (FY: 2019-2020)



Business Locations:



Dhayari, Pune

Survey No.30/2, Sinhgad
Road, Near Dran
Company, Dhayari, Pune,
Maharashtra 411041



Velu, Bhor

Sr. No- 862, Veluphata,
Velugoan, Near Bafna
Automotive Bhor,
Maharashtra 412205



Karad, Satara

Sr. No- 54, Near Hotel
Greenland, Pune
Banglore Highway,
Malkapur, Karad, 415539

**Manufacturer of Precision Sheet Metal Components & assemblies to
Automobile, Chemical, Textile & Home Appliance industries**



www.kakadelaser.in

Scroll Down



Message From MD's Desk



We have been serving the country from last 25 years and now, with the advent of a New India we are also on a journey of transforming ourselves into more customer-focused and market-driven to provide the best quality, high-tech and innovative products across all sectors globally.

With the surge of activities in the manufacturing domain and a rise in spending in every sector of the industry, right from infrastructure to FMCG, there is a colossal demand for sheet metal and fabricated products.

To cater that requirement across the industry spectrum, Kakade laser offers an extensive range of infrastructure & solutions that are characterized by simplicity, cost-effectiveness, modular design, and flexibility.

Furthermore, We are continuously strives for expanding our machine and infrastructural portfolio with innovative solutions to address the needs of emerging markets.

At Kakade Laser, we endeavor Quality in everything we do. Our team thrives on excellence and is committed to delivering the best-in-class quality products through progressive and efficient operations while abiding by our core values It is said if we don't change with time, time will change us. Especially in the context of what we are witnessing in our industry, we at M/s kakade Laser believe that we must embrace the change quickly and wholeheartedly. Mahatma Gandhi once implored "Be the change you wish to see in the world". So, we at M/s kakade Laser take it upon ourselves to further improve the way we operate, communicate, take ownership, remain accountable and take measured decisions.

Our lead will bring the very changes we have called out for in the past, so we can all ride the upcoming wave of growth. Last but most importantly, we believe, employees are prime movers at M/s kakade Laser. Our human capital is built on a workforce diversified over Gender, Geographic location and Cultural background.

We believe only motivated and competent employees can drive an organization towards desired results. Thus, our human resource practices - from employee recruitment to employee engagement, development and performance management - are focused at nurturing the career of the employees while upholding the core values of the organization. Guided by our Values and armed with conviction and commitment, as we march forward in this journey of transforming into a leading global player, we will continue serving and supporting the industry and the community to build a New India.



Vision, Values & Mission



Vision:



Customer delight is paramount



Focus on Technology & Innovation



Product Quality & EHS Policies



Employee are Prime Movers



Sustainable & Profitable Growth



Values:



Encouraging individual's ability & creativity



Opportunities based on merits & nothing is free



Well being of employee, stake holders, community & country



Hard work, Continuous self improvement, innovation & productivity



Mission:



To deliver high quality products on-time to our customers at competitive price, not only to the locations where we operate directly but also where we operate through our growth partners.



To provide direct employment to 500 people by 2025 and indirect employment to 10000 people.



Offering new technology services & solutions in a cost-effective manner.





KAKADE LASER

An ISO 9001:2015 Company

Manufacturer of Precision Engineering & Sheet Metal Components



CNC Laser Cutting Service



CNC Tube & Pipe Cutting Service



CNC Machining Service



CNC Bending Service



CNC Router Service



CNC Laser Marking Service



CNC Waterjet Service



CNC EDM Service



Powder Coating Service



CNC Wirecut Service



Sheet Metal Fabrication Service

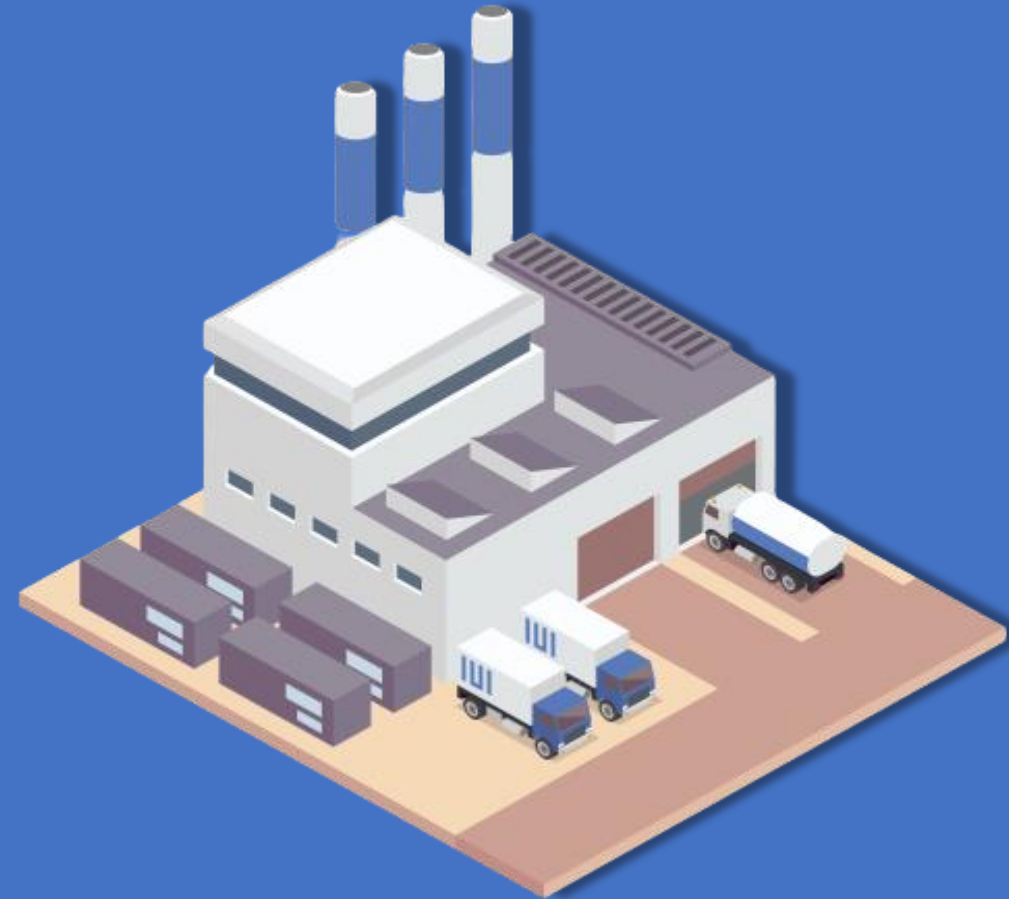


UV Printing Service



CNC Acrylic Laser Cutting Service

Manufacturing Capabilities at Glance



www.kakadelaser.in

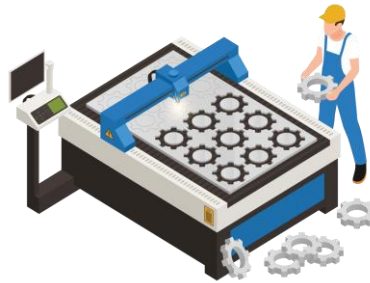
Scroll Down 

CNC Laser Cutting Service

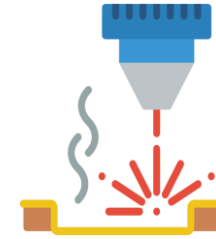


10 No. Of Machines

Highest Configuration Of One Of The Machine From Our Setup



Bed Size:
4000 X 2000mm



Laser Power:
6KW

Material

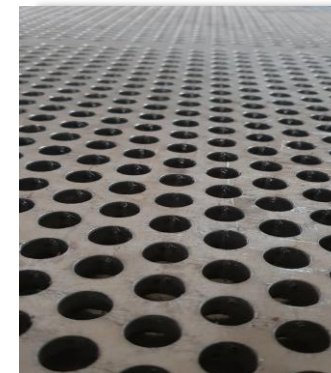
Mild Steel
Up to 25mm

Stainless Steel
Up to 30mm

Aluminium
Up to 30mm

Brass
Up to 15mm

Copper
Up to 12mm

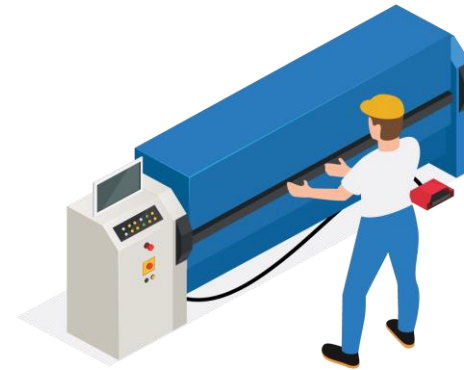


CNC Bending Service



15 No. Of Machines

Highest Configuration Of One Of The Machine From Our Setup



Job Size: 4meter.

Thickness: 16mm



CNC Wirecut Service

Sodick

FANUC

electronica

17 No. Of Machines

Highest Configuration Of One Of The Machine From Our Setup



Bed Size:
600 X 400mm



Cutting Tolerance:
0.002mm

Material

Mild Steel



Stainless Steel



Aluminium



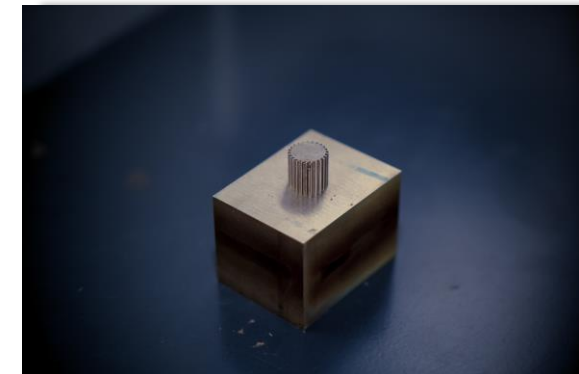
Copper



Brass



* Any Electrical Conductive material can be cut using Wirecut Technology



CNC EDM & EDM Drill Service

Sodick

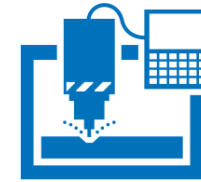
electronica

10 No. Of Machines

Highest Configuration Of One Of The Machine From Our Setup



Bed Size:
600 X 400 X 540mm



Cutting Tolerance:
0.01mm

Material

Mild Steel



Stainless Steel



Aluminium



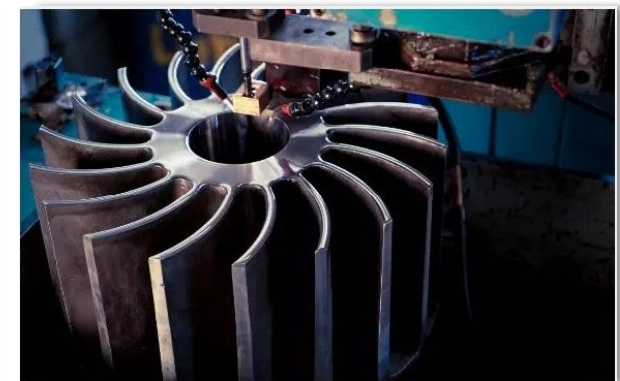
Copper



Brass



* Any Electrical Conductive material can be cut using EDM Technology

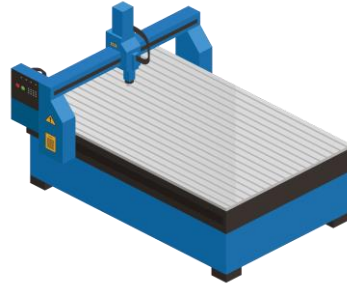


CNC Waterjet Service



3 No. Of Machines

Highest Configuration Of One Of The Machine From Our Setup



Bed Size:
3656 X 1956mm



Speed:
180in/min

Material

Mild Steel



Stainless Steel



Aluminium



Copper



Brass



* With the help of waterjet we can cut all metallic & Non metallic materials

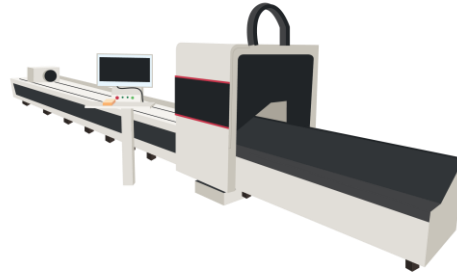


CNC Pipe & Tube Cutting Service



1 No. Of Machine

Highest Configuration Of One Of The Machine From Our Setup



Cutting Diameter:
Round Pipe: Φ 20 to 200mm
Square Pipe: 20 to 150mm



"C" Channel, "L" Channel & Oval shape cutting can be possible

Material

Mild Steel



Stainless Steel



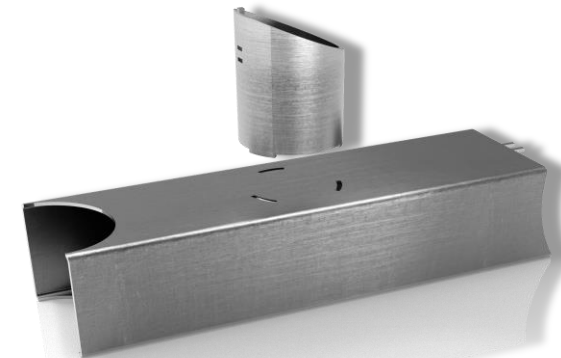
Aluminium



Brass



Copper

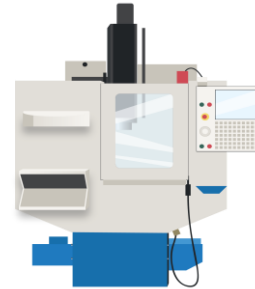


CNC Machining Service



3 No. Of Machines

Highest Configuration Of One Of The Machine From Our Setup



Bed Size:
1321 X 457mm



Speed: 10000
RPM

Material

Mild Steel



Stainless Steel



Aluminium



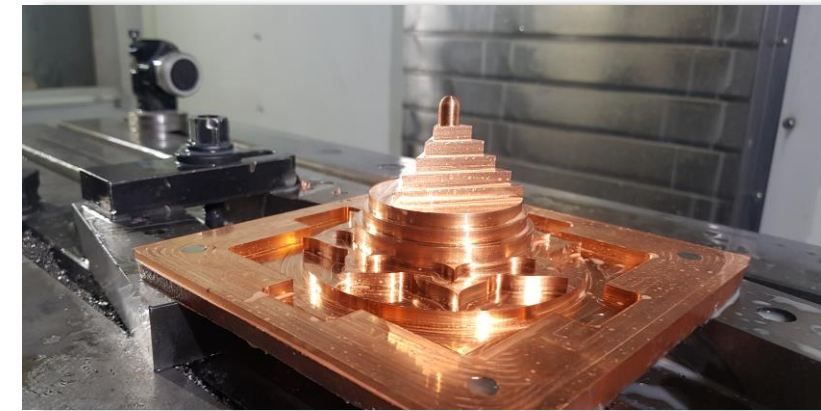
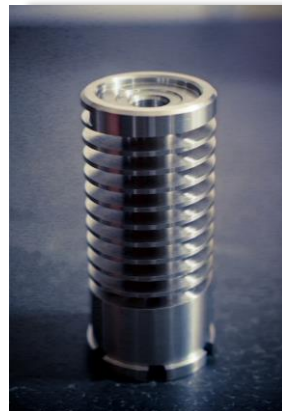
Copper



Brass



* Apart from mentioned materials we can cut many more materials with the help of VMC

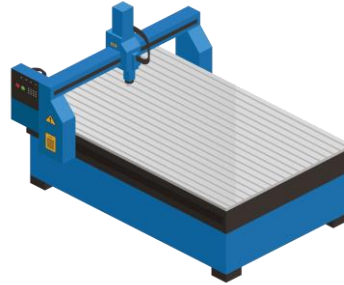


CNC Router Service



4 No. Of Machines

Highest Configuration Of One Of The Machine From Our Setup



Bed Size:
1500 X 3000 X 250mm



Speed: 30000
RPM

Material

Hard Wood



Granite



Soft Wood



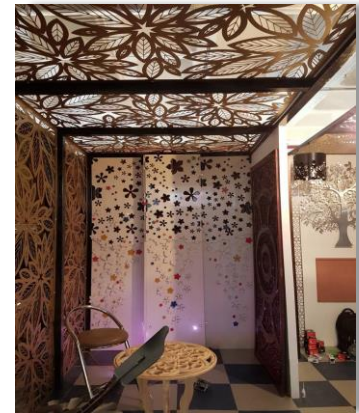
Marble



Mango Wood



* Apart from mentioned materials we can cut many more materials with the help of CNC Router



CNC Laser Marking Service



1 No. Of Machines

Highest Configuration Of One Of The Machine From Our Setup



Bed Size:
300 X 300mm



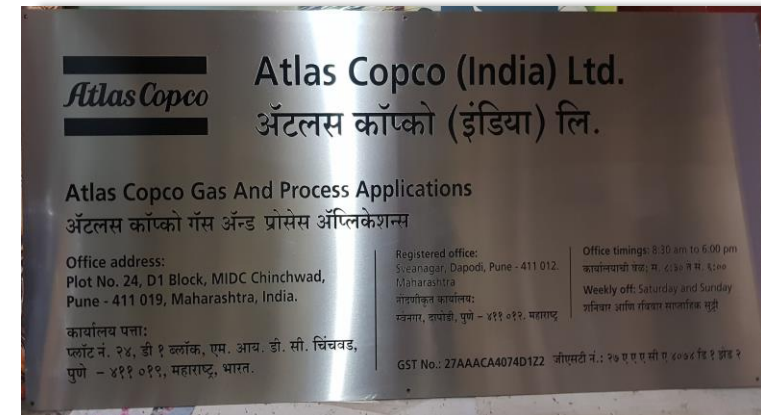
Source: 30
Watts

Material

Mild Steel



Stainless Steel

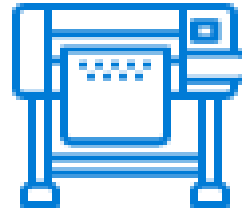


CNC UV Printing Service



1 No. Of Machine

Highest Configuration Of One Of The Machine From Our Setup



Bed Size:
2430 X 1219mm



Ink:
CMYK White & Varnish

Material

Mild Steel



Ceramic Tiles



Laminates



Marble



Plastic



* With the help of UV Printing we can print on almost all materials



Sheet Metal Fabrication Service

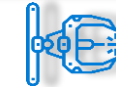


10 No. Of Machine

Fabrication Facilities



Argon | MIG | TIG | Co2 | Arc Welding
Thickness: 0.5 to 30mm



Spot Welding



Stud Welding



Clinching



Riveting

Material

Stainless Steel



Aluminium



Mild Steel

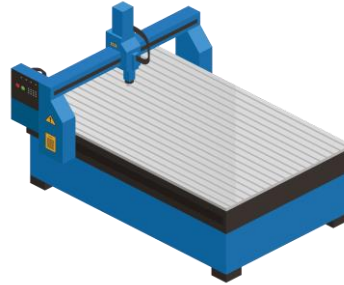


CNC Acrylic Laser Cutting Service



1 No. Of Machine

Highest Configuration Of One Of The Machine From Our Setup



Bed Size:
1250 X 2500mm



Power Source:
150W

Material

Hard Wood



Plastic



Soft Wood



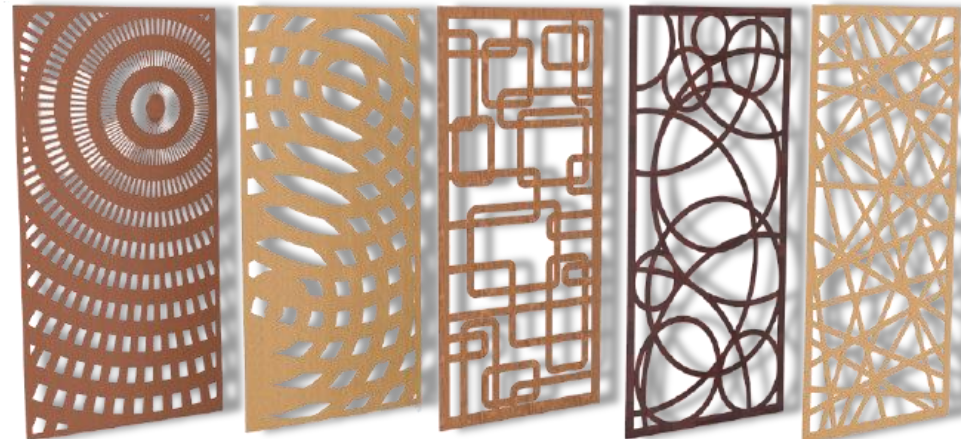
Rubber



Laminates



* Apart from mentioned materials we can cut many more materials with the help of CNC Acrylic laser cutting



Powder Coating Service



Powder Brands
Those We Use

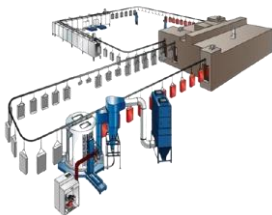
Process Flow Chart For Powder Coating



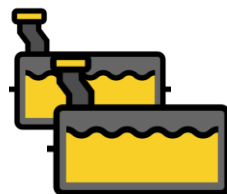
At 120 ° excess moisture removed for for high end result

WAGNER Gun & SS Booth

Why US?



PLC Based Powder Coating Plant



9 Tank PT Process



SS Booth For Quick Colour Changeover



Part will sustain up to 900 to 1000 hours SST

Scroll Down





KAKADE LASER

An ISO 9001:2015 Company

Manufacturer of Precision Engineering & Sheet Metal Components



Appliances



Automotive



Oil & Gas



Telecommunication



Energy Management



Healthcare



Building Automation &
Fire Protection



Solar



Electronics &
Hardware



Railway &
Transportation

Industries We Serve



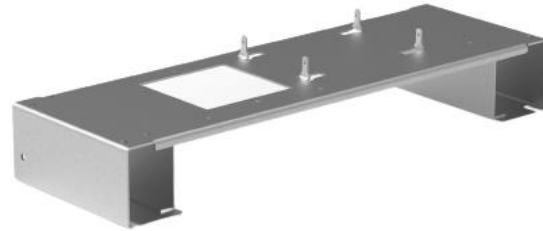
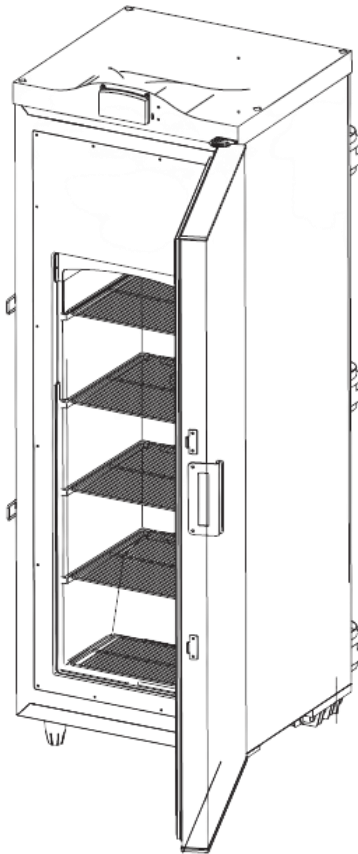
www.kakadelaser.in

Scroll Down



Healthcare Sheet Metal Components

Medical Refrigerator GVR 99 Lite



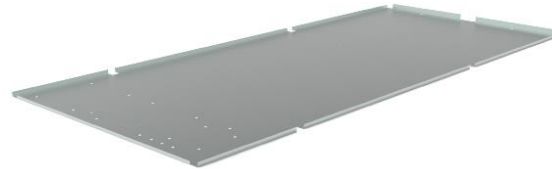
Compressor Metal base



Curtain Bracket



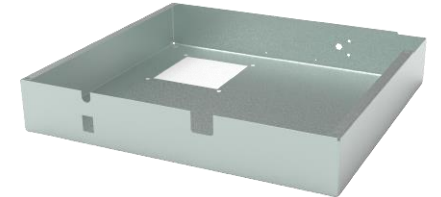
Door Outer



Back Steel Sheet

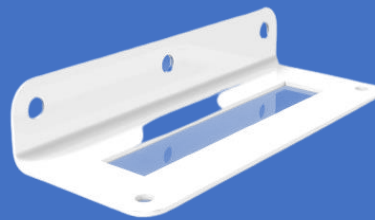


Fan Mounting Plate



Top Panel Lite

Parts With Powder Coating



Door Handle

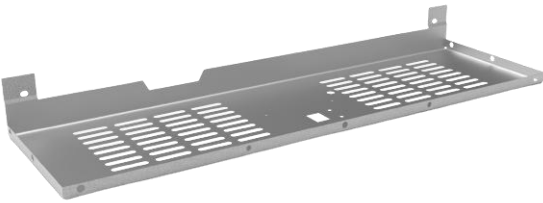
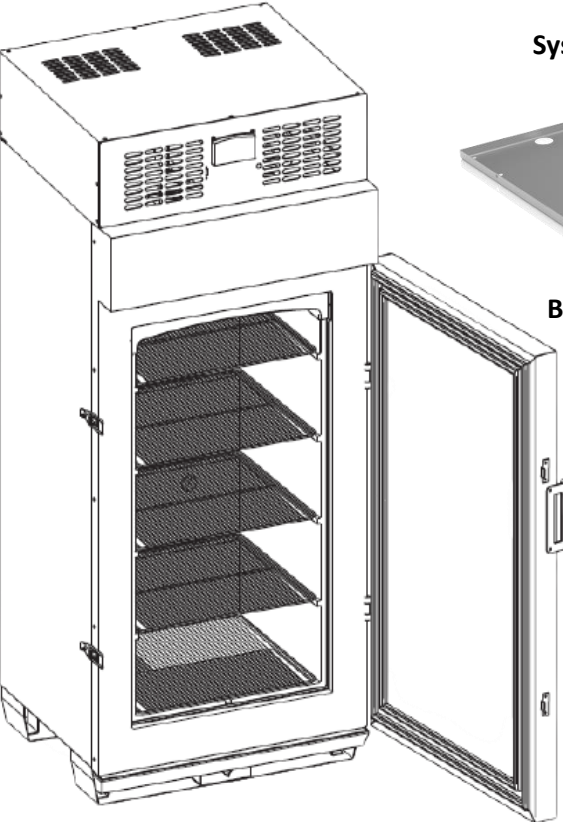


Lock Clip



Healthcare Sheet Metal Components

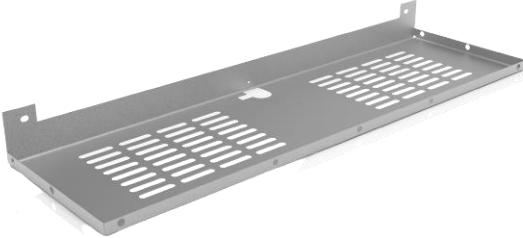
Medical Refrigerator GVR 225 AC



System Cover Bottom Front



Curtain Bracket



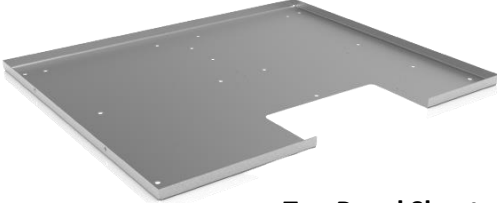
System Cover Bottom Rear



Bottom Steel Sheet



Door Outer



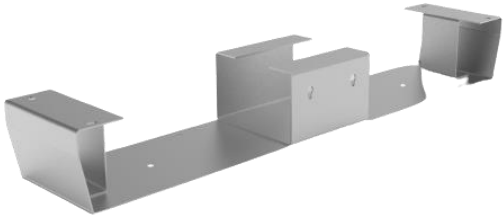
Top Panel Sheet



Side Panel LHS



Side Panel RHS



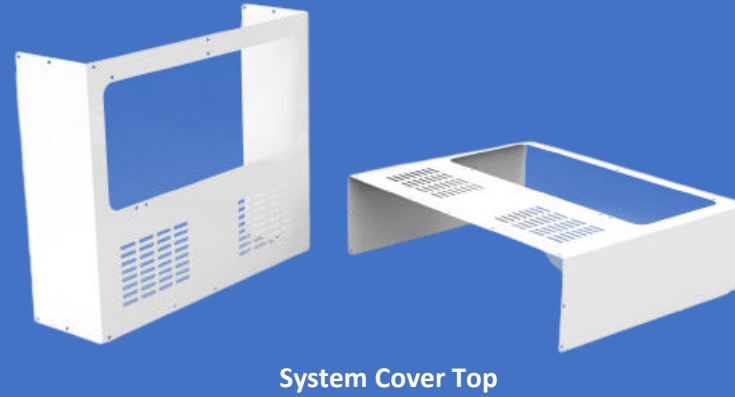
Sheet Metal Base

Healthcare Sheet Metal Components

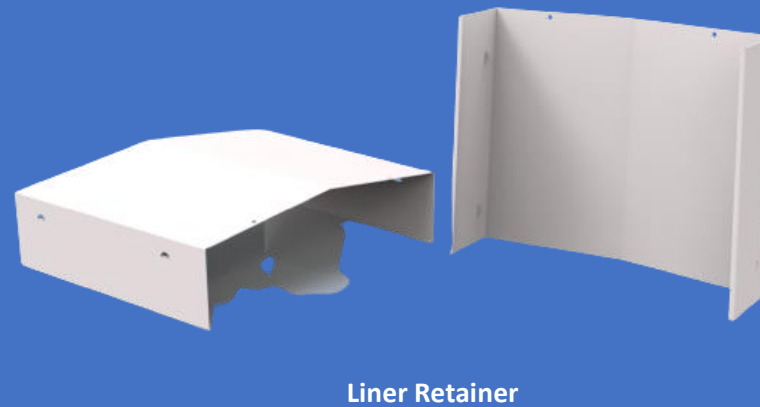
Medical Refrigerator GVR 225 AC



Parts With Powder Coating



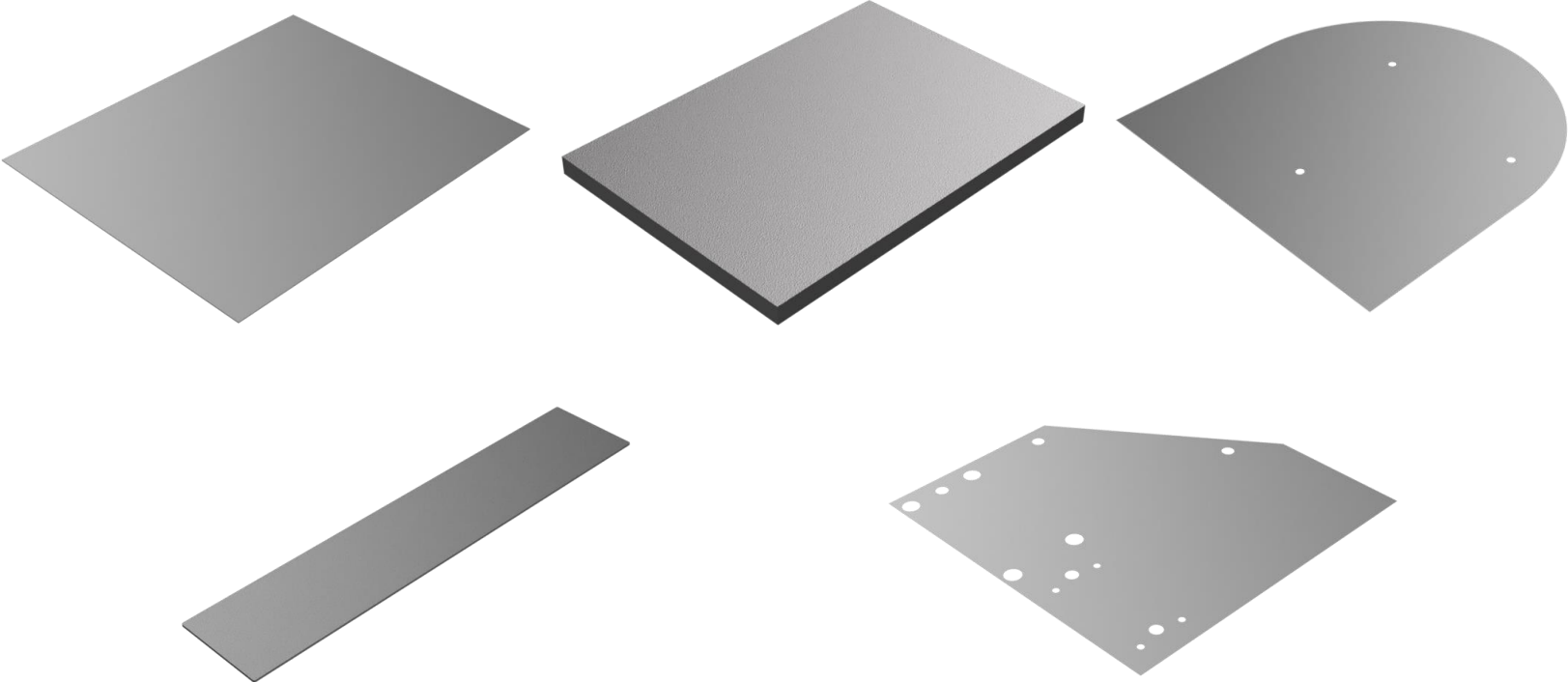
System Cover Top



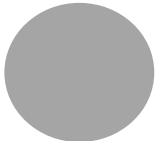
Liner Retainer



Healthcare Sheet Metal Components



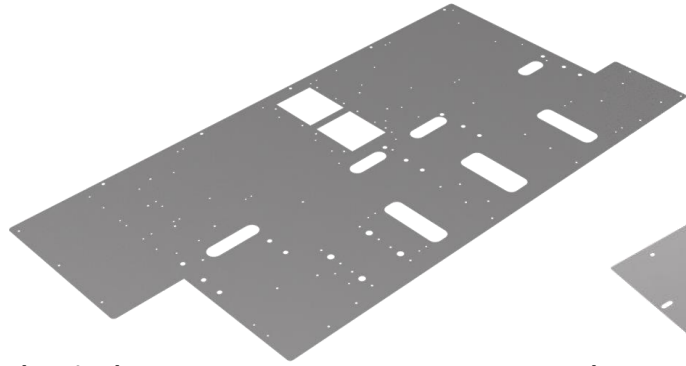
**Material We Deal With ACG
Pharma:**



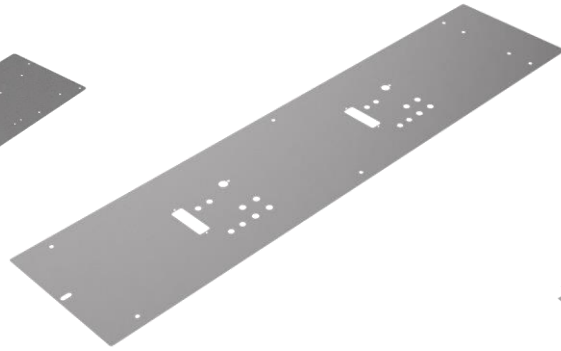
Stainless Steel



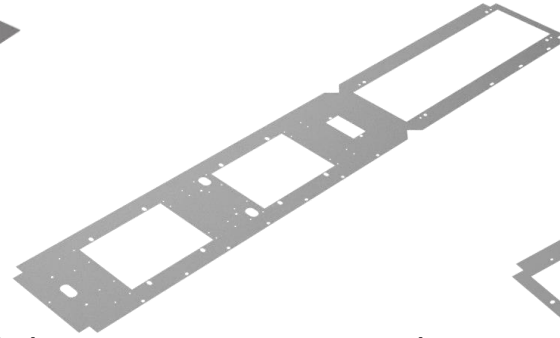
Electrical Sheet Metal Components



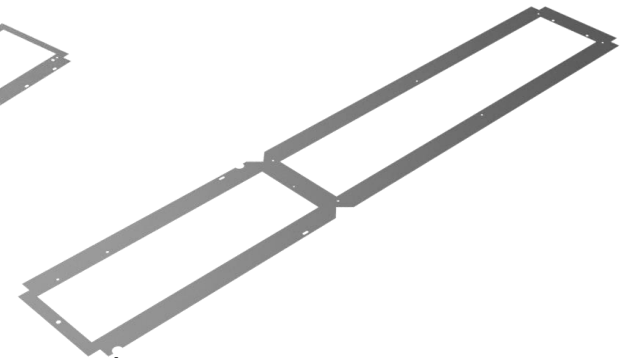
Chassis Sheet



Front Plate



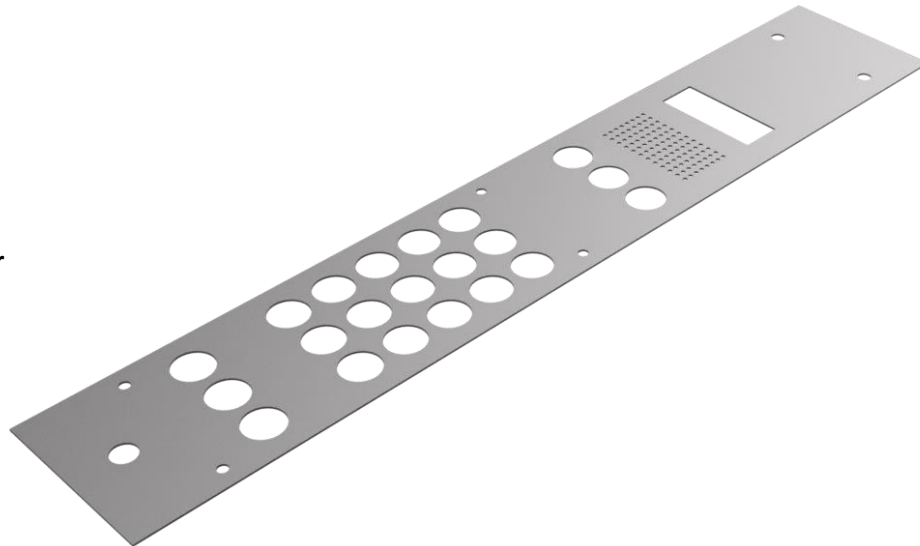
Rack Frame Back Sheet



Rack Frame Front Sheet

Building Automation Sheet Metal Components

Front Plate Cover



Defence Sheet Metal Components

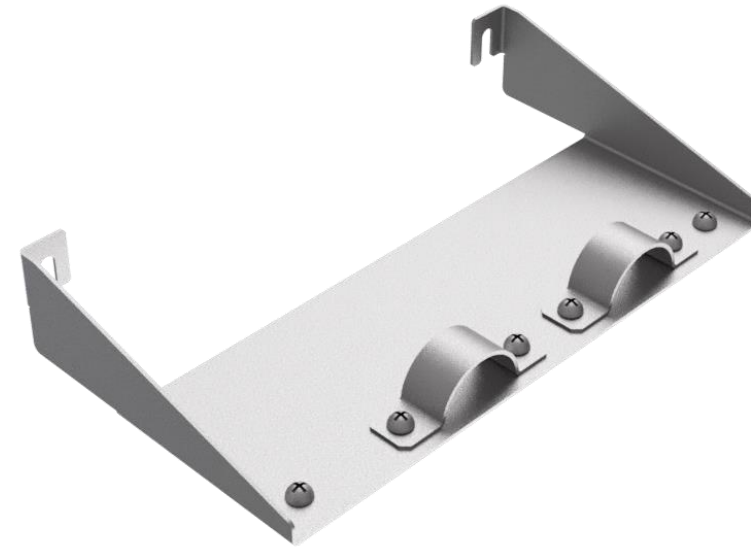


Electronics Sheet Metal Components

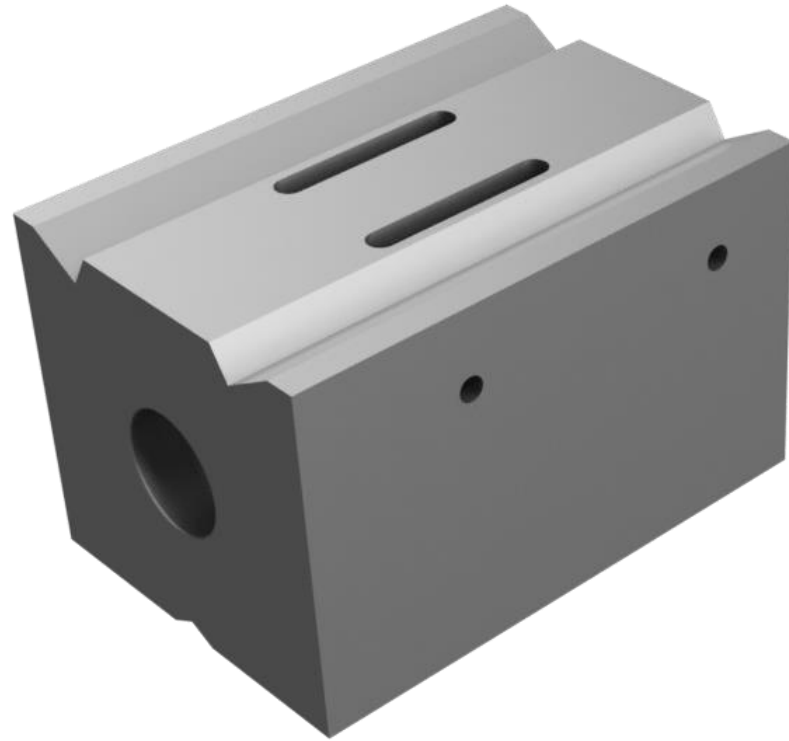
Fan Plate Cover



Power Shield Kit



Tooling Component (Wirecut)



Full Finished Products



Why Us ?



Highly Cost-effective



Prioritise Customer Satisfaction



End to End Solution



Serve Diverse Industries



Quality Assurance



Advance Sheet Metal Processing Machinery



Process Flow Chart For Full Finish Product

Raw
Material
Inward

Inward
Material
Inspection

Cutting &
Bending

Fabrication

Surface
Treatment

Assembly

Final
Inspection

Packaging

Dispatch



CNC Laser Cutting

+



CNC Bending



CNC Waterjet



CNC Wirecut



CNC EDM



CNC Machining



CNC Tube & Pipe Cutting



CNC Acrylic Laser Cutting



Co2 Welding
Argon Welding
MIG Welding
TIG Welding
Arc Welding



Spot Welding



Stud Welding



Clinching



Riveting



Buffing



Powder Coating



UV Printing



Zn Plating
Ni Plating

CED
Cr3

Anodising



Quality Testing Facilities

BAKER

...a passion for precision



Vernier Caliper

Mitutoyo



Digital Height Gauge

TRIMOS



Fischer



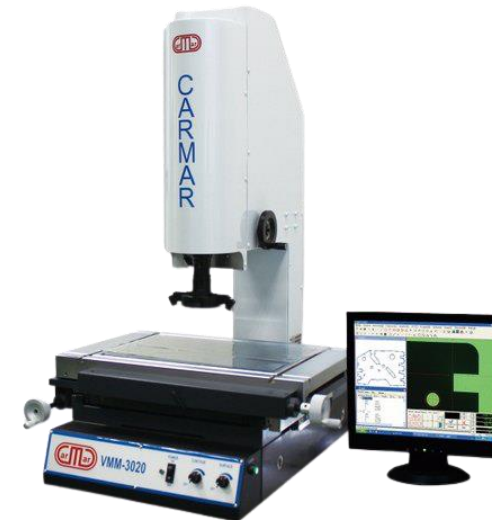
MMS DFT Coating Thickness Gauge



Salt Spray Test Cabinet



Impact Tester



VMM Machine



Quality Certification



System Approach



3D Modelling



AUTODESK
AUTOCAD

Drafting



AUTODESK
FUSION 360

CAM Modelling + Rendering



METALIX

Nesting + Laser Cutting
Programming



Rendering



Production Designer

Sheet Metal Parts Development +
Bending Simulation + Blank
Development

Sheet Works

Sheet Metal Parts 3D Modelling

Blank CAM

Nesting + Laser Cutting
Programming

TRUMPF



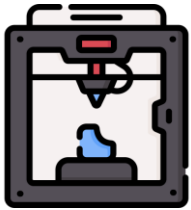
TruTops

Nesting + Laser Cutting
Programming



Future Plans

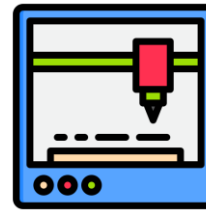
DMLS 3D Printer



RENISHAW
apply innovation™

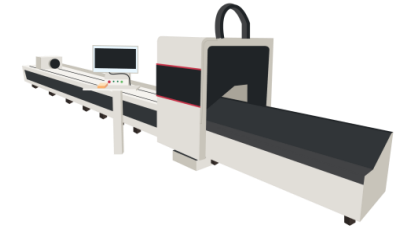


SLA 3D Printer

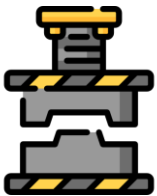


Ultimaker

CNC Pipe & Tube Cutting Machine



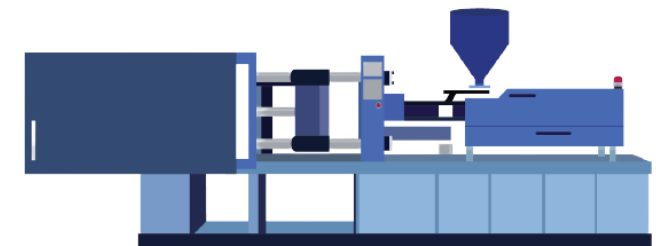
Hydraulic Press



SCHULER

Up to 300 tonnes

CNC Pipe & Tube Cutting Machine



Up to 2000 tonnes



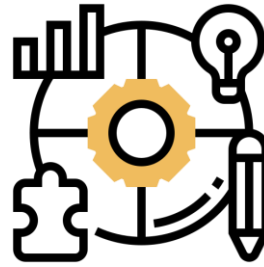
Why Us?



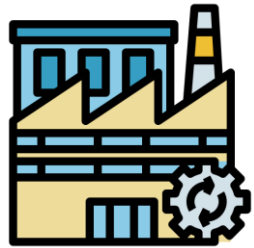
Highly Cost-effective



Prioritize Customer Satisfaction



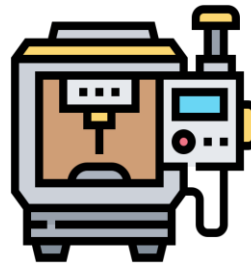
End to End Solution



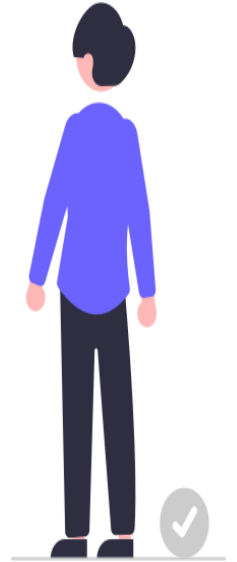
Serves Diverse Industries



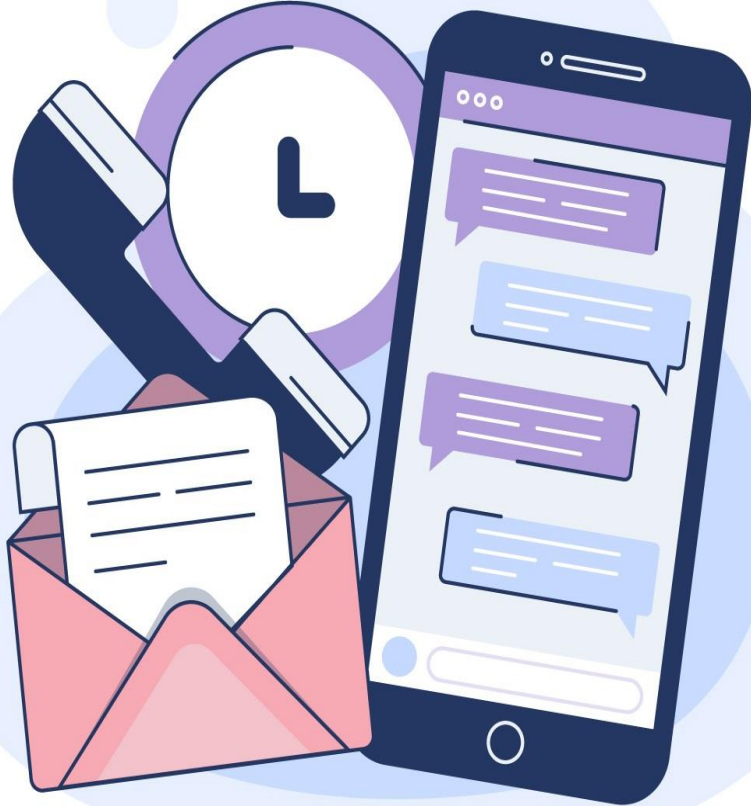
Quality Assurance



Advance Sheet Metal Processing Machinery



Contact Us



marketing@kakadelaser.in



+91 98223 78502 / +91 93703 67284



Business Locations:



Dhayari, Pune

Survey No.30/2, Sinhgad
Road, Near Dran Company,
Dhayari, Pune, Maharashtra
411041



Velu, Bhor

Sr. No- 862, Veluphata,
Velugoan, Near Bafna
Automotive Bhor,
Maharashtra 412205



Karad, Satara

Sr. No- 54, Near Hotel
Greenland, Pune Banglore
Highway, Malkapur, Karad,
415539

**Manufacturer of Precision Sheet Metal Components & assemblies to
Automobile, Chemical, Textile & Home Appliance industries.**



Follow Us On:



www.kakadelaser.in

Scroll Down





KAKADE LASER

An ISO 9001:2015 Company

Manufacturer of Precision Engineering & Sheet Metal Components



CNC Laser Cutting Service



CNC Bending Service



Sheet Metal Fabrication Service



Powder Coating Service



CNC Tube & Pipe Cutting Service



CNC Machining Service



CNC Waterjet Service



CNC Wirecut Service



CNC EDM Service



UV Printing Service



CNC Router Service



CNC Laser Marking Service



CNC Acrylic Laser Cutting Service

thank you

For Moreover Details:



SCAN ME

www.kakadelaser.in

Scroll Down

